

Azienda aderente al gruppo produttori ANFUS

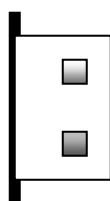
# VENTILATION GRID for fireplaces and chimneys

## TECHNICAL CHART

REV. 0 del 01.03.2012



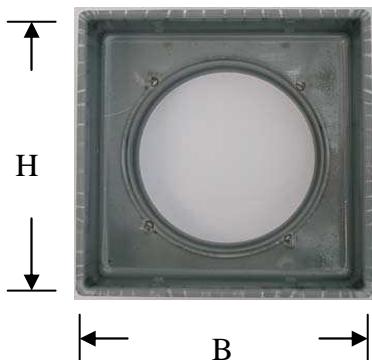
## GRID WITH VENTILATION DAMPER



40 mm depth

### ALUMINIUM PAINTED WITHE

Code	Dim. (mm) L – H	Dim. (mm) air passage l – h	piece/box
GSB140130	140 x 130	112 x 100	5
GSB160150	160 x 150	132 x 124	5
GSB180180	180 x 180	152 x 152	5
GSB200200	200 x 200	172 x 176	5



## ENTRANCE FOR VENTILATION GRID

(applicable to the product code **GSB.....** and **GE.....**)

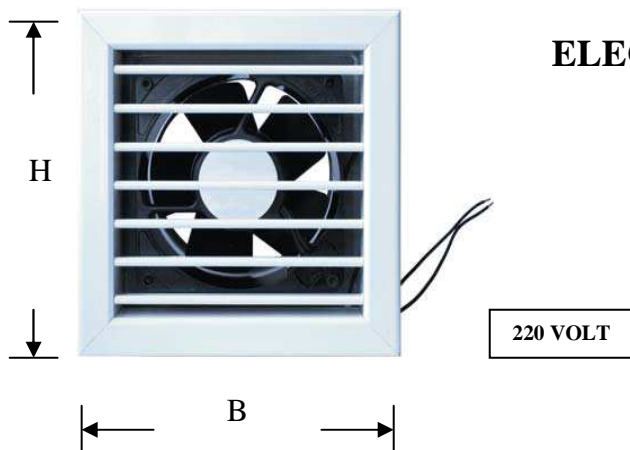
### ELECTROGALVANIZED STEEL SP. 6/10

Code	Dim. (mm) L – H	Dim. (mm) air passage l – h	piece/box
IS140130-80	108 x 108	80	5
IS140130-100	108 x 108	100	5
IS160150-120	130 x 130	120	5
IS1180180-140	150 x 150	140	5
IS200200-150	180 x 180	150	5



## FLUSH ROUND GRID WITH INSECT MESH

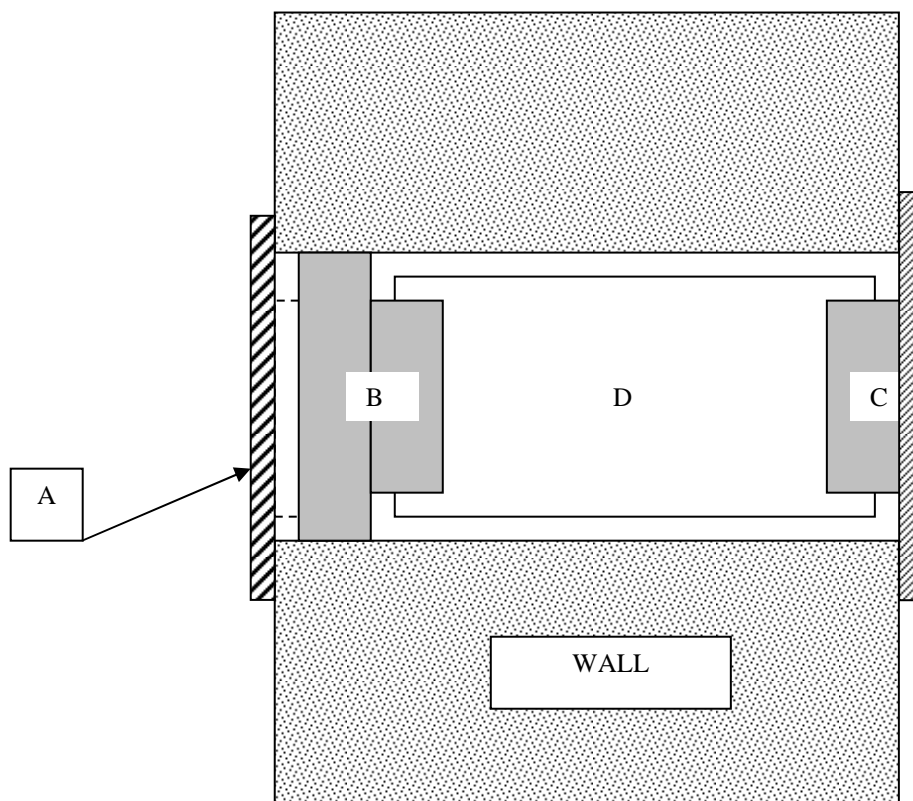
ALUMINIUM			
Code	D (mm)	d (mm)	piece/box
GTAR 80	100	80	5
GTAR 100	125	100	5
GTAR 120	150	120	5
GTAR 140	175	140	5
GTAR 150	175	150	5



## ELECTRIC GRID FOR VENTILATION AND EXTRACTION

Code	Dim. (mm) L – H	Dim. (mm) air passage Ø	piece/box
GE160150-100	160 x 150	100	1
GE180180-120	180 X 180	120	1
GE180180-140	180 X 180	140	1

## OUTLINE APPLICATION OF GRID WALL (eg air intake for chimneys)



A	<b>GRID WITH VENTILATION DAMPER</b> CODE <b>GSB ...</b>
B	<b>ENTRANCE FOR VENTILATION GRID</b> CODE <b>IS ...</b>
C	<b>FLUSH ROUND GRID WITH INSECT MESH</b> CODE <b>GTAR ...</b>
D	<b>PVC PIPE CONNECTION</b> (FACOLTATIVO)

## APPLICATION OF GRID TO FLUE

**THIS APPLICATION IS VERY USEFUL TO MITAGATE/RESOLVE THE FOLLOWING ISSUES:**

In case of intubation (example with stainless steel pipe) of a shaft in masonry, in which there are residues of combustion, the heating can generate gas as a result of exhalation of the same residues and thus develop abnormal pressures between the two flues. It is therefore advisable to avoid this problem, by applying one or more grids to the flue outside, so as to allow gas to flow and thus eliminate the formation of pressure that could also damage the flue weaker (usually succumbs the shaft outer masonry).

Sample preparation of grids for the flow of gas inside the chimney

