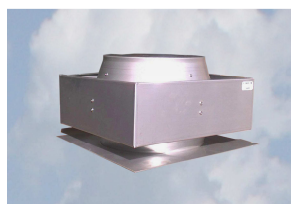


# BLINDART PIRAMIDE

Chimney against the wind - antiseismic

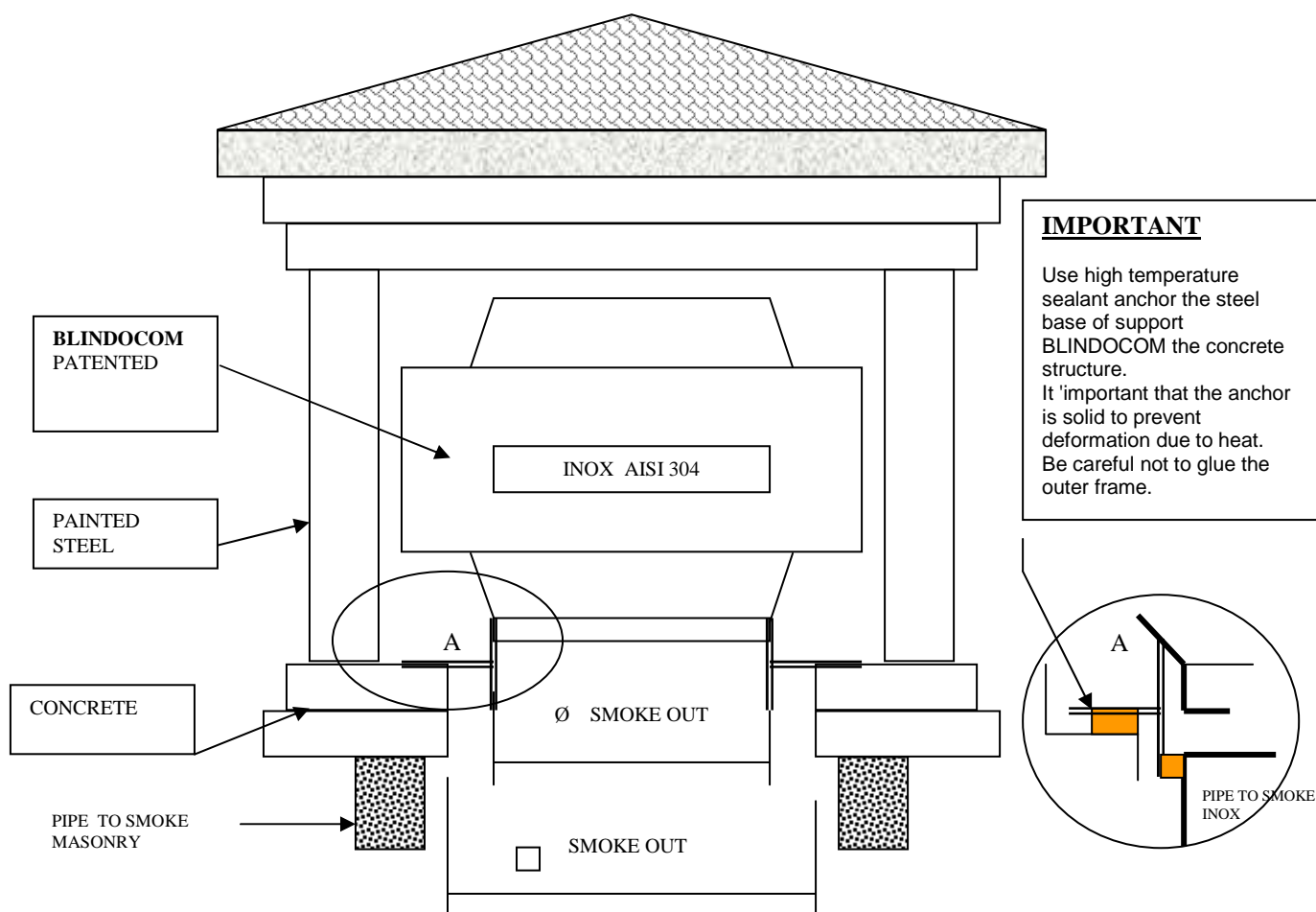


BLINDART PIRAMIDE



BLINDOCOM

# BLINDART PIRAMIDE



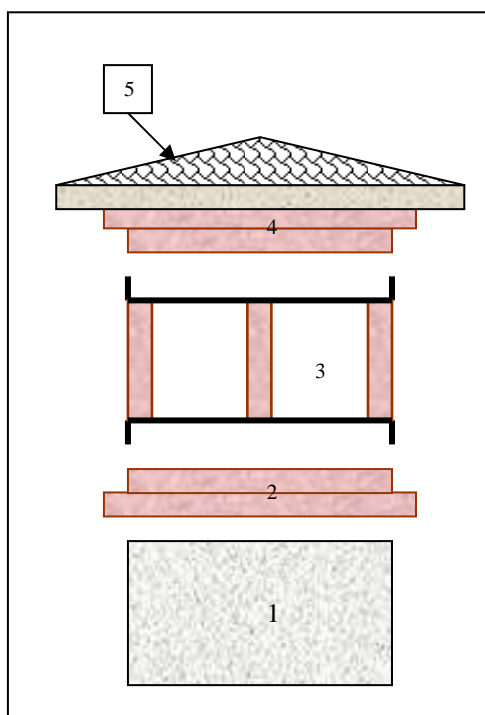
NAME	CODE	MATERIAL	SMOKE OUT mm	OVERALL MAX cm			WEIGT H KG
				COVERAGE	H tot		
<b>PIRAMIDE 250</b> Only masonry structure	PI 250 SC	CONCRETE + PAINTED STEEL	□ 260	56 x 56	75		115
<b>BLINDOCOM + BASE 37 x 37</b>	INQR 250 SC	INOX AISI 304	Ø 250	L 34	H tot 24		6

<b>PIRAMIDE 300</b> Only masonry structure	PI 300 SC	CONCRETE + PAINTED STEEL	□ 350	COVERAGE 63 x 63	H tot 80		150
<b>BLINDOCOM + BASE 45 x 45</b>	INQR 300 SC	INOX AISI 304	Ø 300	L 39	H tot 24		7

## BLINDART PIRAMIDE “SCHEDULE OF ASSEMBLY”



Phase E (View sub-frame part with. 3 removed)



### INSTRUCTIONS FOR INSTALLATION

- A.** Secure it with cement and glue the part. Part 2 of the chimney. 1
- B.** Lower the frame with column part. 3 on the base part. 2
- C.** Lower the base part. 4 columns on the frame part. 3

The positions 2 - 3 - 4 are in solidarity with each other by interlocking housing. You do not need any additional mounting

- D.** Lower part and place the coverage. 5, taking part. 4, fixed with mortar / glue after checking the centering between the two pieces
- E.** Remove the part of the sub-frame part. 3 (area of the frame with 3 columns) and fit within the BLINDOCOM
- F.** Replace the sub-frame part. 3
- G.** Coverage of the hat by the customer with tiles, etc.. (only in the case of Blindarte CASTLE)

### INSTRUCTIONS FOR INSPECTION BY THE FLUE CHIMNEY

You can do this without breaking the glued parts and / or concrete, thus resulting in fast, safe, can be performed by a single operator.

- 1.** Remove the part of the subframe pos. 3 (the one with 3 columns)
- 2.** Remove the BLINDOCOM
- 3.** After repositioning the BLINDOCOM, can replace the subframe.