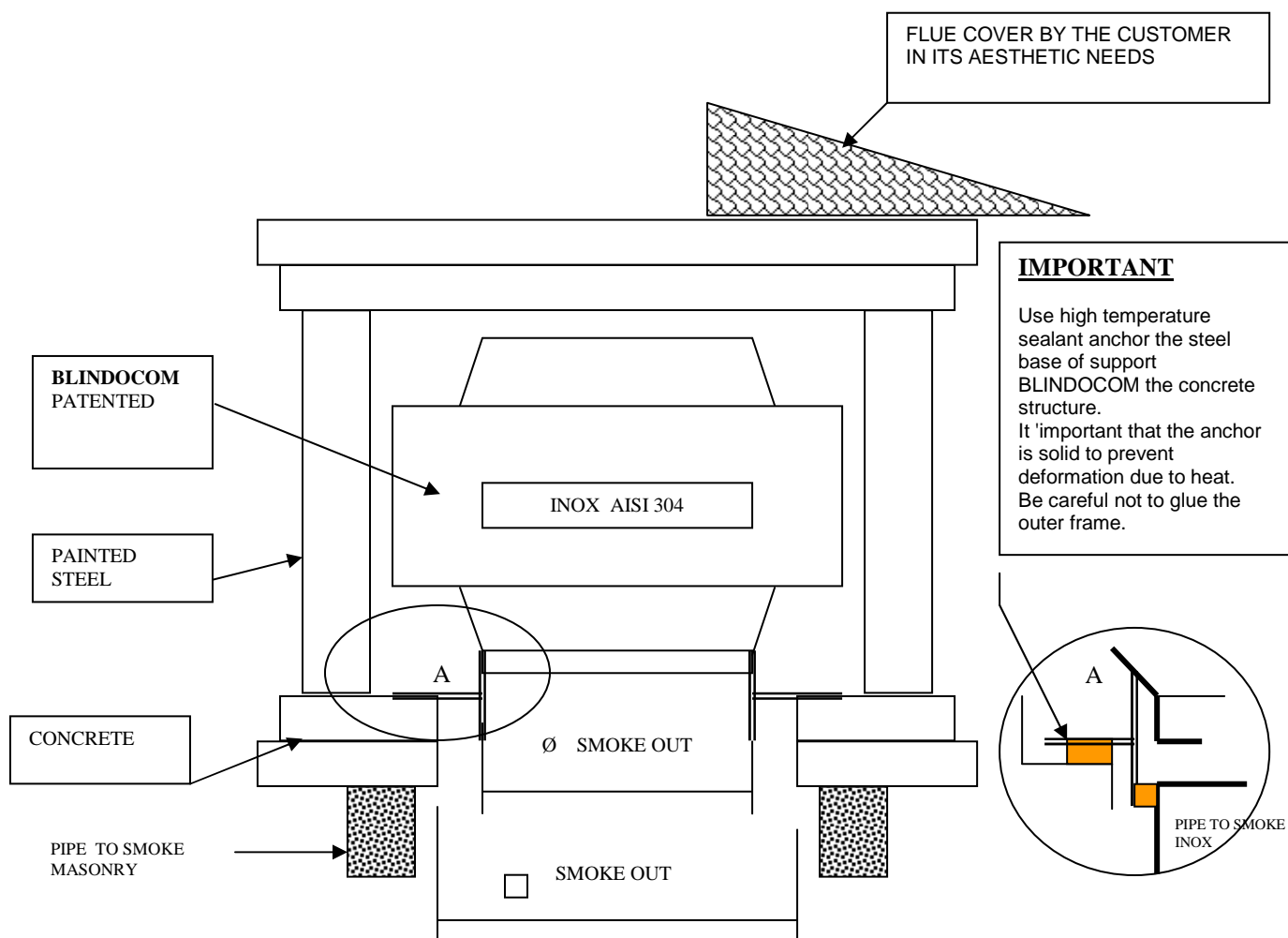
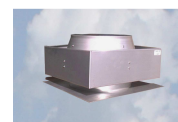
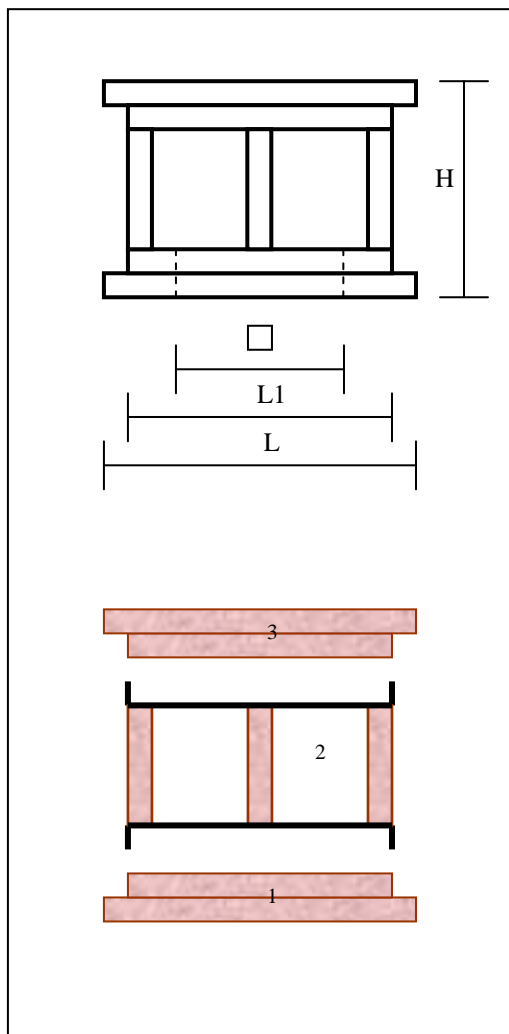


BLINDART FAI DA TE "BUILD YOUR OWN"



NAME	CODE	MATERIAL	SMOKE OUT mm	OVERALL MAX cm			WEIGT H KG
				L	H	L1	
BLINDART FAI DA TE 250	FDT 250 SC	CONCRETE + PAINTED STEEL	□ 260	L 47	H 45	L1 43	65
BLINDOCOM + BASE 37 x 37	INQR 250 SC	INOX AISI 304	Ø 250	L 34	H 24		6
BLINDART FAI DA TE 300	FDT 300 SC	CONCRETE + PAINTED STEEL	□ 350	L 55	H 45	L1 51	80
BLINDOCOM + BASE 45 x 45	INQR 300 SC	INOX AISI 304	Ø 300	L 39	H tot 24		7

BUYING THE ONLY GROUP THAT SEE IN THE PICTURE, YOU CAN BUILD A CUSTOM CHIMNEY



INSTRUCTIONS FOR INSTALLATION

The details 1 - 2 - 3 which represent the bulk of the chimney flue, are in solidarity with each other by interlocking housing. You do not need any additional fixing.

The whole group will be anchored by a ring of the chimney above the ring 3 can make a custom cover.

If the smoke system would have trouble expelling the fumes, you can install the system BLINDOCOM according to the instructions below:

- A.** Remove the part of the subframe pos. 2 (one with 3 columns)
- B.** Secure the base plate with high temperature silicone ring 1
- C.** Enter the BLINDOCOM in the collar of the plate and align the sides of the frame with columns
- D.** Replace the sub-frame pos. 2

INSTRUCTIONS FOR INSPECTION BY THE FLUE CHIMNEY

The operation is extremely simple and can be performed by a single operator

- a.** Remove the part of the subframe pos. 2 (one with 3 columns)
- b.** Remove the base plate by BLINDOCOM
- c.** After repositioning the BLINDOCOM, can replace the subframe. 2