

**BLINDOCOM**  
COMIGNOLO BIDIREZIONALE  
BREVETTO 0001332421 – EP03425322. 9



Azienda aderente al gruppo produttori ANFUS

# **BLINDART**

## **TECHNICAL CHART**

REV. 01 DEL 01.11.2020



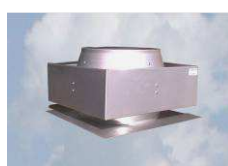
**BLINDART CASTLE**



**BLINDART FAI DA TE**



**BLINDART PIRAMIDE**



**BLINDOCOM**



**PRODUCTS MADE ACCORDING TO EN 1856-1-2**

# Your fireplace smokes? now no more!

## Solve your problem with **BLINDART**, The first artistic chimney against wind – against the earthquake

**THE SOLUTION TO ALL OF YOUR SMOKE PROBLEMS RELATED TO YOUR FIREPLACES, OVENS, ETC.**

### MAIN CHARACTERISTICS:

**BLINDART** is the integration of patented BLINDOCOM, a chimney with precast modular concrete art, and elegant design with strength, durability and safety significant.

### BLINDART OFFERS YOU THESE ADVANTAGES:

Turbulences and air flows (usually disadvantageous with the traditional applications) improve the smoke expulsion, because BLINDOCOM is structured in order to canalize the smoke towards up and down, according to the air flows direction, preventing the smoke from returning in direction of the source.

The correct functioning is not influenced by the position of BLINDOCOM as regards the extremity of the roof and in particular regarding the areas of wind reflow.

There is no interference of smoke conduction in presence of neighbouring and/or adjoined chimneys.

It protects the flue and obstructs it from the access of volatiles and/or others.

It prevents the return of odours deriving from the flue.

It is easy to apply to every type of flue.

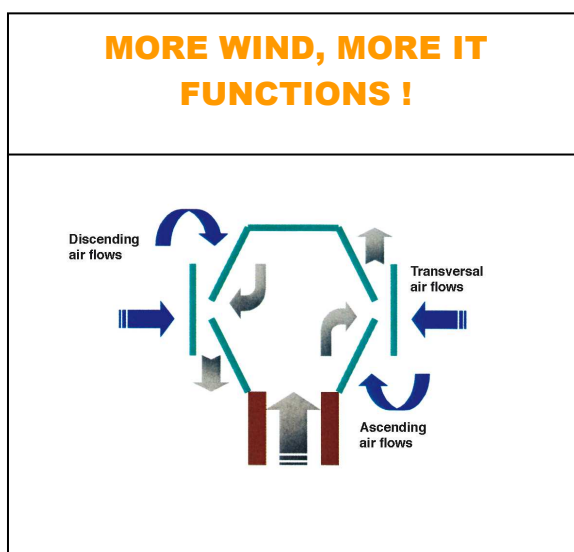
### APPLICATIONS

It can use a masonry chimney that juts out of the roof no more than 50/60 cm, without prejudice to the draft of the smoke, regardless of the position of the chimney over the ridge of the roof and / or other obstacles that can generate a zone of reflow.

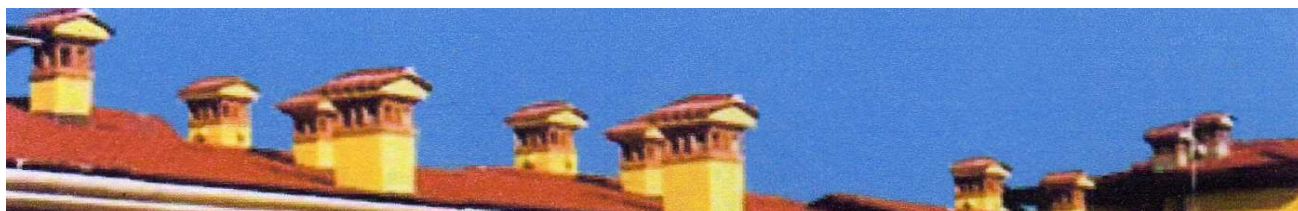
In the first instance, you can install only the masonry structure, only later in the case of poor flue gas were to change very quickly and easily installed within the masonry structure, the BLINDOCOM prepared for this purpose.

### APPLICATIONS:

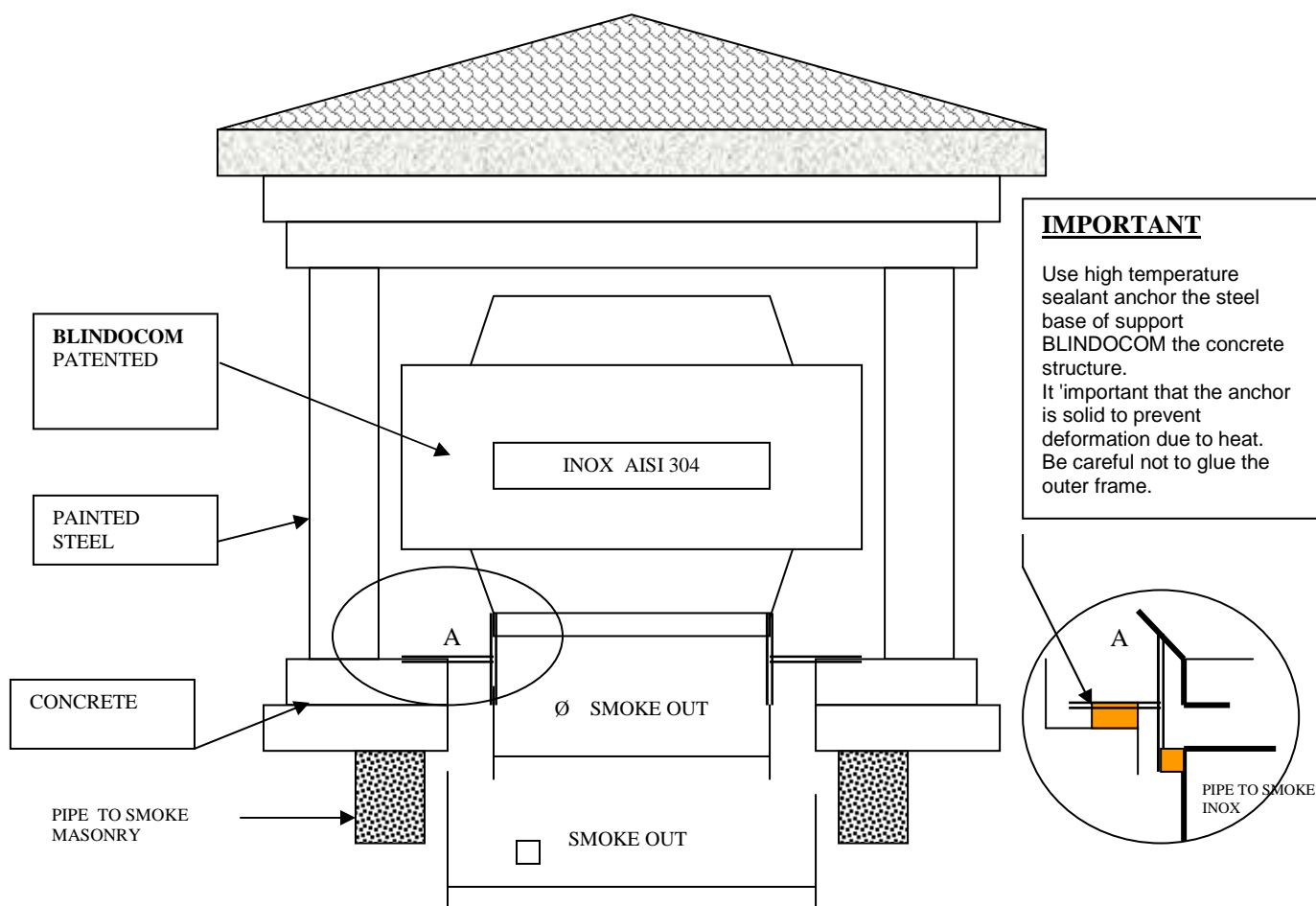
- ☺ Fireplaces
- ☺ Stove



# BLINDART CASTLE e PIRAMIDE



## BLINDART CASTLE e PIRAMIDE



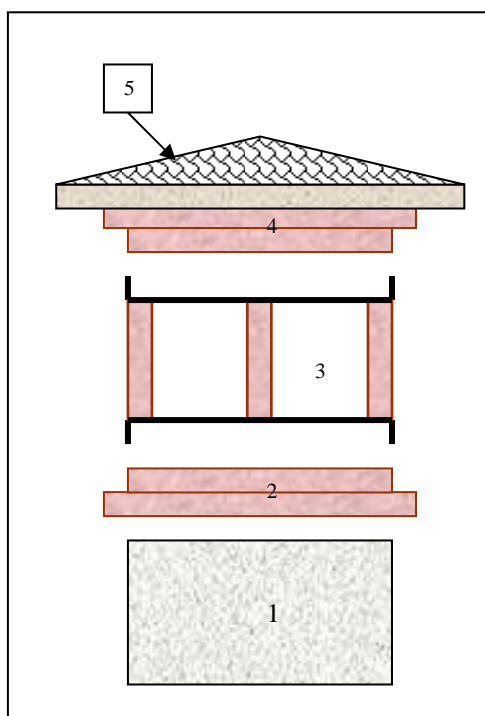
NAME	CODE	MATERIAL	SMOKE OUT mm	OVERALL MAX cm			WEIGHT H KG
				COVERAGE	H tot		
<b>CASTLE 250</b> Only masonry structure	CA 250 SC	CONCRETE + PAINTED STEEL	□ 260	62 x 62	60		120
<b>PIRAMIDE 250</b> Only masonry structure	PI 250 SC	CONCRETE + PAINTED STEEL	□ 260	56 x 56	75		115
<b>BLINDOCOM + BASE 37 x 37</b>	INQR 250 SC	INOX AISI 304	∅ 250	L 34	H tot 24		6

<b>CASTLE 300</b> Only masonry structure	CS 300 SC	CONCRETE + PAINTED STEEL	□ 350	72 x 72	60		160
<b>PIRAMIDE 300</b> Only masonry structure	PI 300 SC	CONCRETE + PAINTED STEEL	□ 350	63 x 63	80		150
<b>BLINDOCOM + BASE 45 x 45</b>	INQR 300 SC	INOX AISI 304	∅ 300	L 39	H tot 24		7

## BLINDART CASTLE e PIRAMIDE “SCHEDULE OF ASSEMBLY”



Phase E (View sub-frame part with. 3 removed)



### INSTRUCTIONS FOR INSTALLATION

- A.** Secure it with cement and glue the part. Part 2 of the chimney. 1
- B.** Lower the frame with column part. 3 on the base part. 2
- C.** Lower the base part. 4 columns on the frame part. 3

The positions 2 - 3 - 4 are in solidarity with each other by interlocking housing. You do not need any additional mounting

- D.** Lower part and place the coverage. 5, taking part. 4, fixed with mortar / glue after checking the centering between the two pieces
- E.** Remove the part of the sub-frame part. 3 (area of the frame with 3 columns) and fit within the BLINDOCOM
- F.** Replace the sub-frame part. 3
- G.** Coverage of the hat by the customer with tiles, etc.. (only in the case of Blindarte CASTLE)

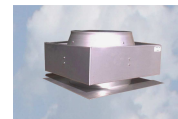
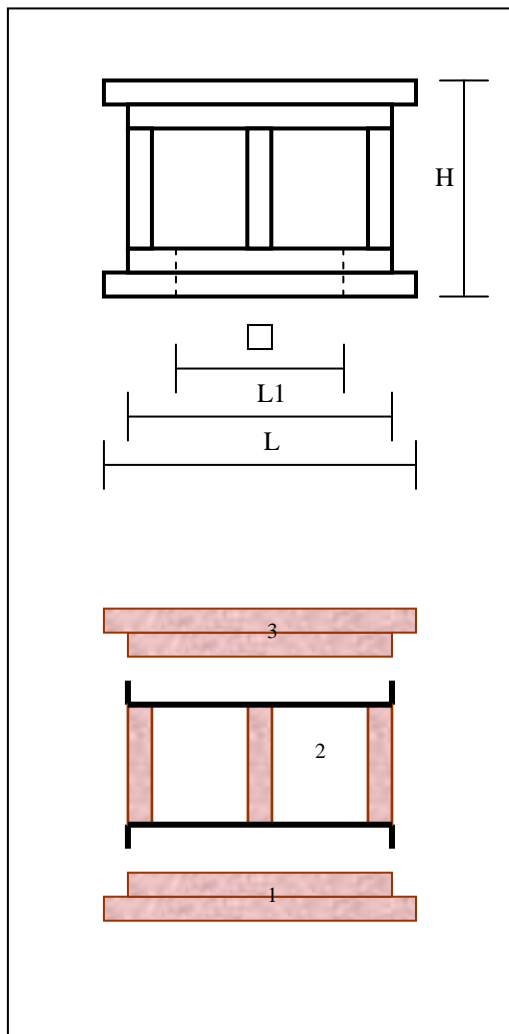
### INSTRUCTIONS FOR INSPECTION BY THE FLUE CHIMNEY

You can do this without breaking the glued parts and / or concrete, thus resulting in fast, safe, can be performed by a single operator.

- 1.** Remove the part of the subframe pos. 3 (the one with 3 columns)
- 2.** Remove the BLINDOCOM
- 3.** After repositioning the BLINDOCOM, can replace the subframe.

# BLINDART FAI DA TE "BUILD YOUR OWN"

BUYING THE ONLY GROUP THAT SEE IN THE PICTURE, YOU CAN BUILD A CUSTOM CHIMNEY



## INSTRUCTIONS FOR INSTALLATION

The details 1 - 2 - 3 which represent the bulk of the chimney flue, are in solidarity with each other by interlocking housing. You do not need any additional fixing.

The whole group will be anchored by a ring of the chimney above the ring 3 can make a custom cover.

If the smoke system would have trouble expelling the fumes, you can install the system BLINDOCOM according to the instructions below:

- A. Remove the part of the subframe pos. 2 (one with 3 columns)
- B. Secure the base plate with high temperature silicone ring 1
- C. Enter the BLINDOCOM in the collar of the plate and align the sides of the frame with columns
- D. Replace the sub-frame pos. 2

## INSTRUCTIONS FOR INSPECTION BY THE FLUE CHIMNEY

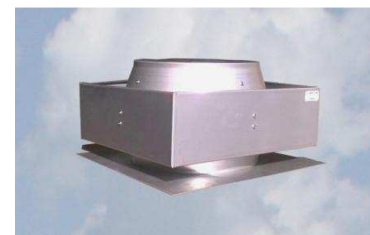
The operation is extremely simple and can be performed by a single operator

- a. Remove the part of the subframe pos. 2 (one with 3 columns)
- b. Remove the base plate by BLINDOCOM
- c. After repositioning the BLINDOCOM, can replace the subframe. 2

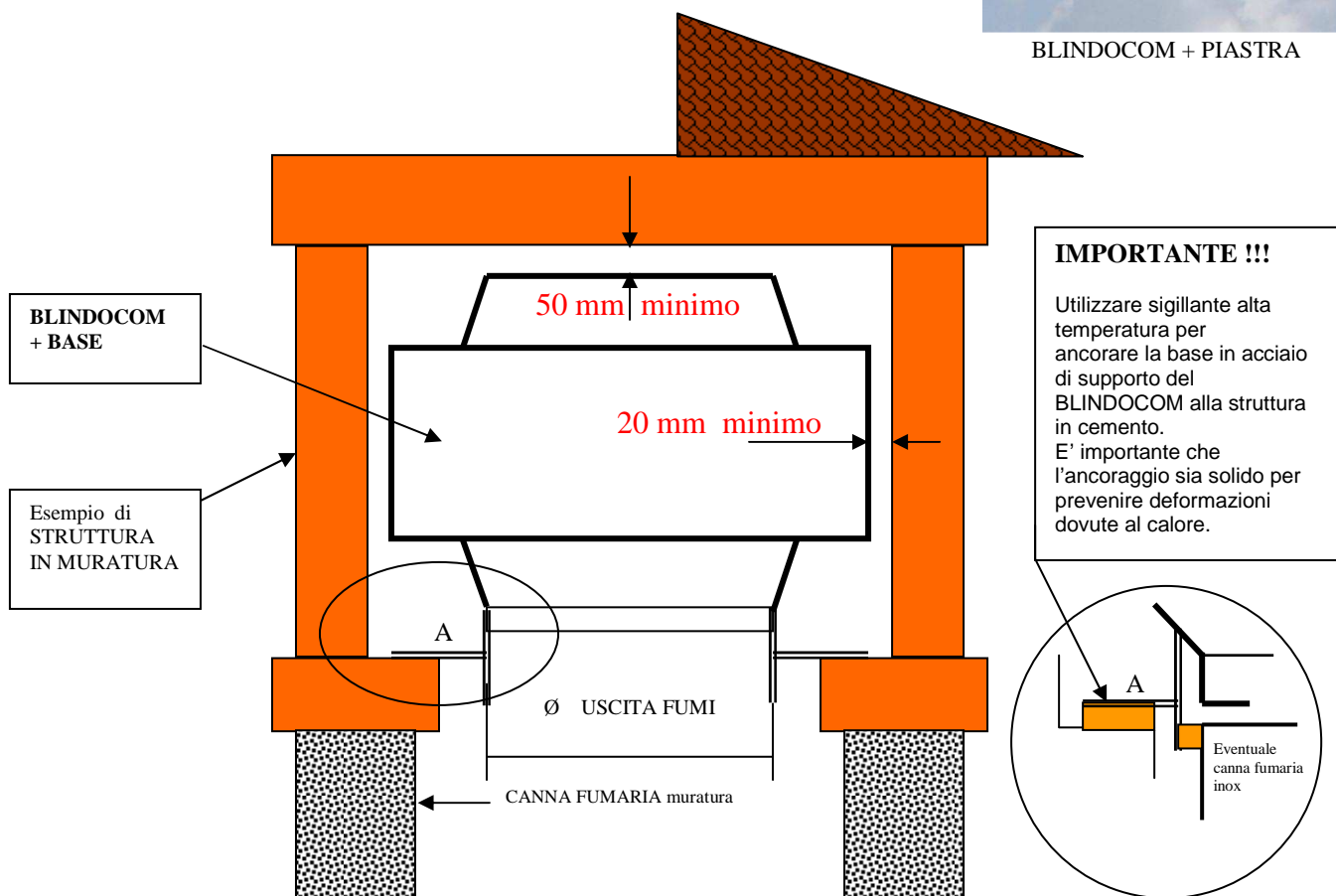
NAME	CODE	MATERIAL	SMOKE OUT mm	OVERALL MAX cm			WEIGHT H KG
				L	H	L1	
<b>BLINDART FAI DA TE 250</b>	FDT 250 SC	CONCRETE + PAINTED STEEL	□ 260	L 47	H 45	L1 43	65
<b>BLINDOCOM + BASE 37 x 37</b>	INQR 250 SC	INOX AISI 304	∅ 250	L 34	H 24		6
<b>BLINDART FAI DA TE 300</b>	FDT 300 SC	CONCRETE + PAINTED STEEL	□ 350	L 55	H 45	L1 51	80
<b>BLINDOCOM + BASE 45 x 45</b>	INQR 300 SC	INOX AISI 304	∅ 300	L 39	H tot 24		7

# BLINDOCOM CON PIASTRA DI BASE

Installato all'interno  
di un comune comignolo in muratura



BLINDOCOM + PIASTRA



### IMPORTANTE !!!

Utilizzare sigillante alta temperatura per ancorare la base in acciaio di supporto del BLINDOCOM alla struttura in cemento. E' importante che l'ancoraggio sia solido per prevenire deformazioni dovute al calore.

DENOMINAZIONE	CODICE	MATERIALE	USCITA FUMI mm	INGOMBRO MAX cm			PESO KG
<b>BLINDOCOM + BASE 37 x 37</b>	INQR 250 SC	INOX AISI 304	Ø 250	L 34	H 24		6
<b>BLINDOCOM + BASE 45 x 45</b>	INQR 300 SC	INOX AISI 304	Ø 300	L 39	H 24		7